



ISO 9001 / ISO 14001



STONE CARE

- Stone Maintenance Solutions
- Natural Stones / Solid Surfaces / Engineered Stones / Ceramics / Other Stones

Conquer Stone Maintenance Problems with



Headquarters & Factory

Jin Gwang Industries Co., Ltd.

11-13, Maejari-gil, Opo-eup, Gwangju-si, Gyeonggi-do, 12798, Republic of Korea

Tel: +82-31-767-8441 Fax: +82-31-767-8442

E-mail: confiad@confiad.com Website: www.confiad.com

For North American Market

Confid, Inc.

1518 N Endeavor Lane Suite B, Anaheim, CA 92801 U.S.A.

Tel: +1-714-635-2210 Fax: +1-714-833-5237 Toll Free: +1-855-885-2800

E-mail: confiad.us@confiad.com Website: www.confiad.us

Copyright© 2021 Jin Gwang Industries Co., Ltd.

Jan. 2021



Stone Filler



Polyester Adhesive



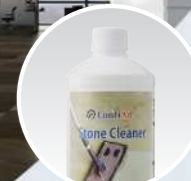
Color Enhancers



Protectors



Polishers



Cleaners

Jin Gwang Ind. www.confiad.com

Confid, Inc. www.confiad.us

INTRODUCTION



Jin Gwang Industries Co., Ltd.

ConfifiAd® is the brand name that is the compound word made up of "Confident" and "Admirable". This means that we focus on manufacturing and supplying "Reliable" and "Commendable" products to customers.

With this faith, our passion for continued research and development of products has produced high quality adhesives from 2000 and turned this passion and resources toward "Stone Care Products" from 2010.

Our continued quest for satisfying our customers in the stone industry has been a catalyst for developing innovative and competitive stone care products. As a result, we have developed more than 40 kinds of stone care products and we are developing 6~8ea of new stone care products every year.

We believe those who work in the stone industry and maintenance industry can achieve the sustainable growth with our ConfifiAd® Stone Care Products. We will continue to share our knowledge and experiences by working together with our valuable customers and business partners.

We very much appreciate your continued support and feedback, as this keeps our research ongoing to better help you, our customers, and business partners.

Jin Gwang Industries Co., Ltd.

President John N. Kim



Stone Care



Solid Surfaces



Quartz Surfaces



Adhesives



Diamond Tools

Product Category



CONTENTS

Company Introduction

Stone Care Products

01	Cleaners	Stone Cleaner	04
		Eco Multi Purpose Cleaner	04
		Neutral Cleaner – Low Foam	05
		Neutral Cleaner	05
		Powerful Acid Cleaner	06
		Rust Remover (Neutral)	06
		Rust Remover (Acid) – Premium	07
		Rust Remover (Gel)	07
		Grout Cleaner	08
		Mould & Moss Remover	08
		Limescale Remover	09
		Wax Stripper	09
		Graffiti Remover	10
		Adhesive Residue Remover	10
		Sealant Stain Remover	11
		Epoxy Remover	11
		Grease Remover	12
		Oil Poultice	12
		Stain Remover Poultice	13
		Poultice Powder	13
02	Polishers	Marble Polishing Powder	14
		Marble Polishing Powder-White	14
		Granite Polishing Powder	15
		Marble Polishing Compound	15
		Polishing Cream for Natural Stones	16
		Polishing Cream for Solid Surfaces	16
		Polishing Cream – Premium	17
		Stone Polish – Wax based	17
		Self Polisher	18
		Crystallizer – Marble	18
		Crystallizer – Granite	19
		Clean, Shine & Protect	19
03	Protectors	Stone Protec	20
		Stone Protec - S	20
		Stone Protec - Limestone	21
		Stone Protec - Water based	21
		Back Surface Protector	22
04	Color Enhancers	Color Intensifier+	23
		Color Intensifier - Water based	23
		Color Intensifier - Super	24
		Color Intensifier - Black	24
		Color Restorer	25
05	Care Sets	Stone Care Set	26
		Daily Care Set	26
		Grease & Oil Remover Set	27
06	Polyester Adhesive		28
07	Stone Filler – Clear		29
	Stone Care Quick Guide		30
	Stone Care Application Effects		31

Stone Cleaner

Stone Cleaner is a highly concentrated alkaline detergent made of biodegradable surfactants, odoriferous substances, solvents and auxiliary materials. It is suitable for a thorough removal of building materials, wax and oil, as well as residues of synthetic colors and coatings on natural and artificial stones.

Features & Advantages

- 3 in one solution "Stain Removing", "Grease Removing", "Wax Removing"
- Removing
 - 1) Stubborn Stains
 - 2) Water-based Coatings & Polishing Waxes
 - 3) Epoxy Grout Residues
 - 4) Paint, Ballpoint Ink Residues
- No Surface Damage
- Highly Concentrated (Dilution Available)
- Highly Biodegradable

Field of use

- Marble, granite, artificial stone, porcelain, tile, concrete, and brick

How to use

1. Dilute the product with waster as required.
 - 1) Stubborn Stains / Marks / Grout - Undiluted
 - 2) Deep Cleaning, Wax Removing - 1:5
 - 3) General Cleaning - 1:10~20
 - 4) Maintenance - 1:200
2. Allow the cleaner to work for a minute.
3. Clean with a single disc professional cleaning machine or a scrubbing brush.
4. Vacuum or wipe up the dirt.
5. Rinse thoroughly with plenty of water.
 - ※ Before applying to the entire surface, test on a small area.

Storage

- Storage Temperature: 5 ~ 30°C (41 ~ 86°F)
- Application Temperature: 5 ~ 30°C (41 ~ 86°F)



Coverage General Cleaning (1:10 ~ 20 Dilution)
Approx. 25 m²/L (255 ft²/qt)
Maintenance (1: 200 Dilution)
Approx. 1,500 m²/L (15,300 ft²/qt)

Packaging 1 L (1.05 qt) × 12 Bottles in 1 Box

Neutral Cleaner – Low foam

Neutral Cleaner (Low foam) is a mild cleaner made of nonionic surfactants, odoriferous substance, alcohols and auxiliary materials. The product is particularly efficient for the final vacuum cleaning on the floor because of the low foam.

Features & Advantages

- Neutral detergent (pH 6~7)
- Low foaming
- Fast drying and cleaning

Field of use

- Marble, granite, artificial stone, porcelain, and tiles

Storage

- Storage Temperature: 5 ~ 30°C (41 ~ 86°F)
- Application Temperature: 5 ~ 30°C (41 ~ 86°F)

How to use

1. Dilute the product with waster as required.
 - 1) Stubborn Stains – No Dilution
 - 2) General Cleaning – 1:30
 - 3) Maintenance – 1:100 (No rinsing required)
2. Clean with a moist cloth or a single disc professional cleaning machine with a soft disc (white or beige), or a scrubbing brush.
3. Remove the residue and the excess with a vacuum or a cloth.
 - ※ Before applying to the entire surface, test on a small area.



Coverage General Cleaning (1:30 Dilution)
Approx. 50 m²/L (510 ft²/qt)
Maintenance (1: 100 Dilution)
Approx. 150 m²/L (1,530 ft²/qt)

Packaging 1 L (1.05 qt) × 12 Bottles in 1 Box

Eco Multi Purpose Cleaner

Eco Multi Purpose Cleaner is a highly biodegradable eco-friendly product with the food grade ingredients. The product is effective for removing dirt, limescale, oil residues from glasses, mirrors, floors, walls, bathrooms, restrooms, kitchen surfaces, and tiles.

Features & Advantages

- Eco-friendly
- Multi-purpose cleaning
- Very easy to apply
- Soft gloss effect

Field of use

- All kinds of stones, glass, mirror, stainless steel, tile, and etc.

Storage

- Storage Temperature: 5 ~ 30°C (41 ~ 86°F)
- Application Temperature: 5 ~ 30°C (41 ~ 86°F)

How to use

1. Spray the product evenly on the surface.
2. Spread with a coarse cloth or sponge and allow to work for a short period of time.
3. Take off the dirt with a coarse cloth or sponge and wipe the surface well with a lint-free cloth until the surface is free of streaks.
4. For stubborn dirt, apply the product more intensively, allowing it to work for 5~10 minutes. If necessary, scrub the surface with a brush.
5. Rinse thoroughly with water until any excess has been taken off.
 - ※ Before applying to the entire surface, test on a small area.



Coverage 1~10 m²/L (10~102 ft²/qt)

Packaging 500 ml (0.53 qt) × 20 Bottles in 1 Box

Neutral Cleaner

Neutral Cleaner is a concentrated gentle detergent made of biodegradable surfactants, odoriferous substance, alcohols and auxiliary materials. It is a mild and essential for pretreated and acid sensitive materials such as marble, polished natural stone, artificial stone.

Features & Advantages

- Neutral detergent (pH6~7)
- Fast drying and cleaning
- Highly concentrated (Dilution available)
- Highly biodegradable
- No rinsing required when dilution 1:200

Field of use

- Marble, granite, artificial stone, porcelain and, tiles

Storage

- Storage Temperature: 5 ~ 30°C (41 ~ 86°F)
- Application Temperature: 5 ~ 30°C (41 ~ 86°F)

How to use

1. Dilute the product with waster as required.
 - 1) Stubborn Stains – Undiluted
 - 2) General Cleaning – 1:30
 - 3) Maintenance – 1:200 (No rinsing required)
2. Clean with a moist cloth or a single disc professional cleaning machine with a soft disc (white or beige), or a scrubbing brush.
3. Remove the residue and the excess with a vacuum or a cloth.
 - ※ Before applying to the entire surface, test on a small area.



Coverage General Cleaning (1:30 Dilution)
Approx. 50 m²/L (510 ft²/qt)
Maintenance (1: 200 Dilution)
Approx. 150 m²/L (1,530 ft²/qt)

Packaging 1 L (1.05 qt) × 12 Bottles in 1 Box

Powerful Acid Cleaner

Powerful Acid Cleaner is a cleaning agent based on inorganic acids, non-ionic surfactants, rust inhibitors, and additives. The product is effective for removing lime residues, efflorescence, severe deposits of acid-resistant stone & tile especially for exterior use.

Features & Advantages

- Removes all grout residues and heavy duty stains
- Eliminates efflorescence from terracotta, acid-resistant natural stone, and tile
- All-in-one descale and detergent containing high concentrations of surfactants

Field of use

- Terracotta, porcelain tile, glazed ceramic, and acid resistant stone

Storage

- Storage Temperature: 5 ~ 30°C (41 ~ 86°F)
- Application Temperature: 5 ~ 30°C (41 ~ 86°F)

How to use

1. Wet the surface thoroughly with clean water.
2. Dilute the product with water in 1:5~1:10 and apply to the stone surface.
3. Allow the product to work for 5~10 minutes.
4. For deep stains, scrub with a single disc professional cleaning machine or large brush.
5. Remove all residues using a cloth or a liquid vacuum and rinse with plenty of water.
6. When any stubborn dirt remains, repeat the wash more concentrated solutions.
 - ※ Before applying to the entire surface, test on a small area.



Coverage 10~40 m²/L (102~408 ft²/qt)
Packaging 1 L (1.05 qt) × 12 Bottles in 1 Box

Rust Remover(Acid) - Premium

Rust Remover(Acid)- Premium is suitable for removing not only severe rust stains on the surface but also rust stains caused by indwelling rust of acid-resistant natural and artificial stone. The product is only effective for acid-resistant stones but not acid-sensitive stones.

Features & Advantages

- Rust removing for acid-resistant stones
- Non-ionic surfactants
- Free from hydrochloric acid
- Highly concentrated
- Highly biodegradable

Field of use

- Acid resistant natural stone and artificial stone
- ※ **Do not use the product on marble, limestone, and travertine that are weak to acid.** For marble, limestone, and travertine, use "Rust Remover (Neutral)" or "Rust Remover (Gel)".

Storage

- Storage Temperature: 5 ~ 30°C (41 ~ 86°F)
- Application Temperature: 5 ~ 30°C (41 ~ 86°F)

How to use

1. Apply the undiluted product with a solid brush or a spatula on the absolutely dried stone surface. To avoid new rusting on untreated surface and changes in color, apply to the whole stone surface.
2. Allow the product to work for up to 24 hours.
3. For avoiding dry of treated surfaces, cover them with a synthetic foil.
4. Rinse thoroughly with water until the excess has been taken off.
5. If necessary, repeat the process on a dried stone.
6. After the stone has been successfully treated, apply "ConfAd® Stone Protec" to prevent watery substances from penetrating into the stone as an additional measure against new rust.
 - ※ Before applying to the entire surface, test on a small area.



Coverage 10~30 m²/L (102~306 ft²/qt)
Packaging 1 L (1.05 qt) × 12 Bottles in 1 Box

Rust Remover - Neutral

Rust Remover (Neutral) is a liquid type product, especially formulated for the removal of rust stains from the acid sensitive stones (Marble, granite, limestone, travertine, calcareous stone, slate, terracotta, and ceramic). It does not contain acids and therefore, it can be used on polished marble, without ruining the shine.

Features & Advantages

- Rust removing for **Acid sensitive stones**
- Quick removing rust stains (less than 10 minutes)
- Safe & easy to use

Field of use

- Acid sensitive stones (Marble, granite, limestone, travertine, calcareous stone, slate, terracotta, and ceramic)

Storage

- Storage Temperature: 5 ~ 30°C (41 ~ 86°F)
- Application Temperature: 5 ~ 30°C (41 ~ 86°F)

How to use

1. Clean the stone surface and allow to dry.
2. Apply the product evenly on the rust stains to be removed, using a brush or a cotton wool.
3. Allow the product to work for 5~10 minutes. Do not allow the product to react for more than 10 minutes (danger of stain forming).
4. It will turn its original light-yellow color into dark violet.
5. If necessary, support the cleaning process mechanically with a brush or a scrubber.
6. Rinse thoroughly with water and allow to dry.
7. If necessary, repeat the application.
8. After the stone has been successfully treated, apply "ConfAd® Stone Protec" to prevent watery substances from penetrating into the stone as an additional measure against new rust.
 - ※ Before applying to the entire surface, test on a small area.



Coverage 15~30 m²/L (153~306 ft²/qt)
Packaging 1 L (1.05 qt) × 12 Bottles in 1 Box

Rust Remover - Gel

Rust Remover (Gel) is a gel type product, especially formulated for the removal of rust stains from the acid sensitive stones (Marble, granite, limestone, travertine, calcareous stone, slate, terracotta, and ceramic). It does not contain acids and therefore, it can be used on polished marble, without ruining the shine.

Features & Advantages

- Rust removing for **Acid sensitive stones**
- Quick removing rust stains (less than 10 minutes)
- Safe & easy to use
- Vertical application available

Field of use

- Acid sensitive stones (Marble, granite, limestone, travertine, calcareous stone, slate, terracotta, and ceramic)

Storage

- Storage Temperature: 5 ~ 30°C (41 ~ 86°F)
- Application Temperature: 5 ~ 30°C (41 ~ 86°F)

How to use

1. Wet the surface with clean water.
2. Apply the product evenly on the rust stains to be removed, using a spatula or a small spoon.
3. Allow the product to work for 5~10 minutes. Color change shows that the necessary reaction for rust removal has correctly occurred. Do not allow the product to react for more than 10 minutes (danger of stain forming).
 - ※ Before applying to the entire surface, test on a small area for checking the specific activation time.
4. Rinse with abundant water and repeat the application if necessary.
5. After the stone has been successfully treated, apply "ConfAd® Stone Protec" to prevent watery substances from penetrating into the stone as an additional measure against new rust.



Coverage 15~30 m²/L (153~306 ft²/qt)
Packaging 1 L (1.05 qt) × 5 Bottles in 1 Box

Grout Cleaner

Grout Cleaner is a cleaning agent effective for removing heavy duty stains on grout joints of various kinds of tiles (Floors and Walls).



Features & Advantages

- Good grout removing effect
- Easy to use
- Non acidic
- Does not damage tile surfaces

Field of use

- Marble, granite, ceramic tile, quarry tile, slate, and brick

Storage

- Storage Temperature: 5 ~ 30°C (41 ~ 86°F)
- Application Temperature: 5 ~ 30°C (41 ~ 86°F)

Coverage 1~10 m²/L (10~102 ft²/qt)

Packaging 1 L (1.05 qt) × 12 Bottles in 1 Box

How to use

1. Apply the product directly onto the grout to be cleaned.
2. Leave for a few minutes.
3. Work with a coarse cloth or a brush.
4. Rinse thoroughly.
5. If necessary, repeat the 1~4 procedure.
 - ※ Before applying to the entire surface, test on a small area.



Limescale Remover

Limescale Remover is a highly concentrated product suitable for removing limescale and calcium deposits in bathroom faucets, bathtubs, toilets, shower booths, shower heads, and etc.



Features & Advantages

- To all bathroom available
- Applicable to most metals
- Highly concentrated
- Use diluted, depending on the pollution

Field of use

- Porcelain tile, glazed ceramic tile, glass, stainless steel, granite, and etc.

Storage

- Storage Temperature: 5 ~ 30°C (41 ~ 86°F)
- Application Temperature: 5 ~ 30°C (41 ~ 86°F)

Coverage 1~20 m²/L (10~204 ft²/qt)

Packaging 1 L (1.05 qt) × 12 Bottles in 1 Box

How to use

1. Apply the product with a sponge on the stained area.
2. Wait about 5 minutes to react with limescale.
3. Wash with clean water.
 - ※ Depending on the level of dirt, apply the product diluted with water (1:0 ~ 1:10).
 - ※ Before applying to the entire surface, test on a small area.

Mould & Moss Remover

Mould & Moss Remover is a liquid-type detergent developed to effectively remove mould and moss of various stones from the inside or outside of buildings.

Before After



Features & Advantages

- Good mould & moss removing effect
- Fast & Effective
- Strong Alkali

Field of use

- All kinds of natural stone and artificial stone, terracotta, brick, and concrete.

Storage

- Storage Temperature: 5 ~ 30°C (41 ~ 86°F)
- Application Temperature: 5 ~ 30°C (41 ~ 86°F)

Coverage 4~6 m²/L (41~61 ft²/qt)

Packaging 1 L (1.05 qt) × 12 Bottles in 1 Box

How to use

1. Pour the product on a mould and moss contaminated area. After 2-3 minutes, wash with water.
 - ※ In case of stubborn mould and moss, apply the product on the contaminated area sealing it with a plastic wrap, and allow 3~5 hours to work.
 - ※ For wall application, wet the product with paper towel or toilet paper, or cotton and then apply to the contaminated area on a wall.
2. After work, wipe with a dry cloth and let it dry.
3. If the contamination remains, repeat the procedure.
 - ※ Before applying to the entire surface, test on a small area.



Before After

Wax Stripper

Wax Stripper is a cleaning agent based on efficient solvents, surfactants and special additives. The product is for removing wax and silicone sealant residues, and the stain residues by oil, grease, tar on natural stone and cast stone.



Features & Advantages

- Removing wax and residues of tar, grease, adhesive, paints
- Excellent cleaning effect
- Transparent and easy to use

Field of use

- Marble, granite, slate, terracotta, ceramic tile, and etc.

Storage

- Storage Temperature: 5 ~ 30°C (41 ~ 86°F)
- Application Temperature: 5 ~ 30°C (41 ~ 86°F)

Coverage 20~30 m²/L (204~306 ft²/qt)

Packaging 1 L (1.05 qt) × 12 Cans in 1 Box

How to use

1. Apply the undiluted product evenly with a brush or a cloth to dried surfaces.
2. Let it work for 10~20 minutes to penetrate sufficiently. For heavy duty stains, scrub with a brush or a nylon pad (white).
3. Remove the excess with a dry cloth.
4. Clean thoroughly with "ConfiaAd® Stone Cleaner".
 - ※ Before applying to the entire surface, test on a small area.

Graffiti Remover

Graffiti Remover is a water-soluble solvent based cleaner effective for removing graffiti, spray paint (lacquer), marker, and ink on stone surfaces. The gel formula allows easy cleaning of vertical surfaces.

Before After

Features & Advantages

- Removes graffiti quickly without any effects on surfaces
- Easy to apply
- Good for vertical surfaces

Field of use

- Marble, granite, limestone, brick, concrete, clinker, and etc.

Storage

- Storage Temperature: 5 ~ 30°C (41 ~ 86°F)
- Application Temperature: 5 ~ 30°C (41 ~ 86°F)

Coverage 1~2 m²/L (10~20 ft²/qt)
Packaging 1 L (1.05 qt) × 5 Bottles in 1 Box



How to use

1. The surface must be dry.
2. Apply the product evenly with a brush or a spatula.
3. Wait about 10 minutes for the product to penetrate.
4. The softened pain can be washed off with warm water.
5. If the area to be treated is large, it is effective to clean with a high pressure cleaner.
6. If necessary, repeat the 2~4 procedure.
 - ※ Before applying to the entire surface, test on a small area.

Sealant Stain Remover

Sealant Stain Remover is a solvent based cleaner removing uncured sealant, unreacted oil (oil residue, plasticizer), and sealant remains. The product is also effective for removing dirt residues.

Before After

Features & Advantages

- Good sealant stain removing effect
- Very easy to apply
- Fast drying

Field of use

- Marble, limestone, granite, and other natural stones.

Storage

- Storage Temperature: 5 ~ 30°C (41 ~ 86°F)
- Application Temperature: 5 ~ 30°C (41 ~ 86°F)

Coverage 10~20 m²/L (102~204 ft²/qt)
Packaging 1 L (1.05 qt) × 12 Cans in 1 Box



How to use

1. Remove a cured sealant with a spatula or a stiff brush.
2. Apply the product with a clean cloth. Always use a clean cloth to avoid contamination of the surface.
3. Always wipe in one direction.
4. If necessary, repeat the procedure.
5. After cleaning the surface, dry sufficiently.
 - ※ Before applying to the entire surface, test on a small area.

Adhesive Residue Remover

Adhesive Residue Remover is a solvent-based product effective for removing stickers, labels, adhesive tapes, and silicone residues on any surfaces.

Before After

Features & Advantages

- Excellent adhesive residue removing effect
- Quick effect
- Transparent
- Easy to use

Field of use

- Natural stone, porcelain tile, glass, metal, and etc.

Storage

- Storage Temperature: 5 ~ 30°C (41 ~ 86°F)
- Application Temperature: 5 ~ 30°C (41 ~ 86°F)

Coverage 1~10 m²/L (10~102 ft²/qt)
Packaging 250ml (8.45 oz) × 24 Cans in 1 Box



How to use

1. Remove the stickers, labels, adhesive tapes, and silicone residues, using a sharp-edged tool (box cutter, knife).
2. Apply the product with a cloth or a brush.
3. Let it work for a few minutes.
 - ※ Do not let the product be dried.
4. After the adhesive residue is dissolved, scrape it off using a spatula.
5. Wipe out with a cloth or a kitchen towel.
6. If necessary, repeat the procedure and act the product longer.
 - ※ Before applying to the entire surface, test on a small area.

Epoxy Remover

Epoxy Remover is a cleaning agent to remove residues of epoxy resin or epoxy joint mortar on natural and artificial stones.

Before After

Features & Advantages

- Good epoxy removing effect
- Easy to use
- Fast & Effective
- Leaves no residue

Field of use

- Granite, limestone, terrazzo, brick, ceramic, tile, and concrete ashlar

Storage

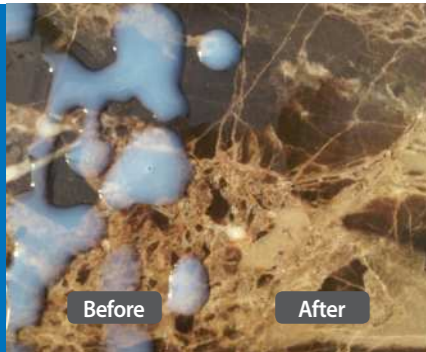
- Storage Temperature: 5 ~ 30°C (41 ~ 86°F)
- Application Temperature: 5 ~ 30°C (41 ~ 86°F)

Coverage 1~10 m²/L (10~102 ft²/qt)
Packaging 1 L (1.05 qt) × 12 Bottles in 1 Box



How to use

1. Clean and dry the surface.
2. Apply the product evenly with a brush, mop or roller.
 - 1) On freshly grouted plates (1~5 days) : Reaction time is 30~60minutes.
 - 2) Older or stubborn epoxy resin films : Reaction time may be 4~6 hours,
 - ※ The applied product must never be dried during that time.
 - ※ If necessary, wet with fresh epoxy remover.
 - ※ Every 10~20 minutes, brush or scrub the applied area.
3. Rinse with plenty of water.
4. If necessary, repeat the procedure.
5. Allow to dry thoroughly after work.
6. For wall application, mix with "ConfAd® Poulitce Powder" making paste type.
 - ※ Before applying to the entire surface, test on a small area.



Grease Remover

Grease Remover is a solvent-based product applicable to all natural stones and artificial stones. The product is very effective for removing heavy duty grease, oil, and wax stains.



Features & Advantages

- Paste type: useful for vertical application
- Easy and convenient to use
- Applicable to both natural stone and artificial stone
- Very effective for heavy stains

Field of use

- Marble, natural stone, artificial stone, and concrete

Storage

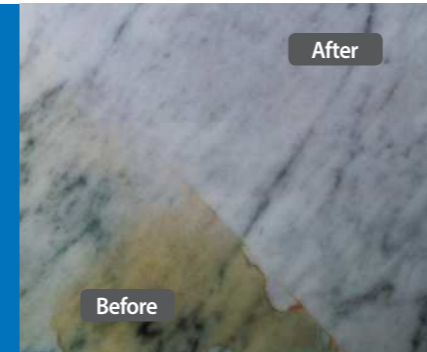
- Storage Temperature: 5 ~ 30°C (41 ~ 86°F)
- Application Temperature: **10 ~ 25°C (50 ~ 77°F)**

Coverage 0.2~2m²/L (2~20 ft²/qt.)

Packaging 250ml (8.45 fl.oz) × 12 Tubes in 1 Box

How to use

1. Clean and dry the surface.
2. Using a spatula or a spoon, spread the product on the surface with 1~2mm thick. Suitable working temperature : 10~25°C (50~77°F)
3. Once completely dry (approximately 4 hours), remove the residue by wiping and vacuum suction.
4. If necessary, in the case of heavy duty stains, repeat the procedure.
5. It is recommended to use "ConfiaAd® Neutral Cleaner" as a final cleaning.
 - ※ Before applying to the entire surface, test on a small area.



Stain Remover Poultice

Stain Remover Poultice is ready to use non-acidic cleaner that safely removes the severe atmospheric stains and other foods, alkali, epoxy stains. The product is appropriate for both exterior and interior stone surface.



Features & Advantages

- Removes food, alkali, and epoxy stains
- Effective for deep oil and dirt
- Non-acidic formula
- Easy to use

Field of use

- Marble, limestone, granite, and other natural stones.

Storage

- Storage Temperature: 5 ~ 30°C (41 ~ 86°F)
- Application Temperature: 5 ~ 30°C (41 ~ 86°F)

Coverage 0.05~0.40 m²/kg (0.24~1.95 ft²/lb)

Packaging 2kg (4.4 lb) Bucket

How to use

1. Apply the product uniformly to the surface with 5~10mm thick, using a spatula.
2. Using a light polyethylene film or other moisture resistant material, cover the treated area. Tape or seal off the edges of the film and make several small holes on the film.
3. Allow the product to remain on the surface for 12~48 hours. After that, remove the film and fully dry the paste.
4. Scrape off the dried product and wash the surface thoroughly with fresh water using a sponge or a soft cloth.
5. Repeat the application if necessary.
 - ※ Before applying to the entire surface, test on a small area.



Oil Poultice

Oil Poultice is a paste-type remover easy to remove deep oil, grease, ink stains, and marks on stone surface.



Features & Advantages

- Pulls out deep oil stains
- Leaves no residues
- Fast & Effective
- Easy to use

Field of use

- Marble, granite, limestone, travertine, slate, sandstone, concrete, and quartzite

Storage

- Storage Temperature: 5 ~ 30°C (41 ~ 86°F)
- Application Temperature: 5 ~ 30°C (41 ~ 86°F)

Coverage 0.1~0.2 m²/kg (0.49~0.98 ft²/lb)

Packaging 1kg (2.2 lb) × 6 Cans in 1 Box

How to use

1. Clean and dry the surface.
2. Using plastic or wooden spatula, stir thoroughly to mix the paste.
3. Apply the product to the stain.
4. Do not cover the treated area.
5. Wait 24~28 hours to allow the product to completely dry.
6. Use a spatula to remove and discard the dried product.
7. If the stain does not disappear completely after drying, repeat the procedure.
 - ※ Before applying to the entire surface, test on a small area.



Poultice Powder

Poultice Powder is a fine and non-acidic absorbent powder. The product itself has no cleaning function but designed to "work with other cleaners" to draw out various stubborn stains from most absorbent surface materials. The product enables liquid type cleaners to be applied on a wall as well.



Features & Advantages

- No cleaning function by itself but enhance other cleaners' performance
- Enable other liquid type cleaners for the wall application
- Fast & Effective
- Easy to use
- Non-Acidic

Field of use

- Marble, granite, slate, terracotta, limestone, terrazzo, agglomerate, sanded grout, cement, and brick

Storage

- Storage Temperature: 5 ~ 30°C (41 ~ 86°F)
- Application Temperature: 5 ~ 30°C (41 ~ 86°F)

Coverage None

Packaging 1kg (2.2 lb) Bucket

How to use

1. Wet the stained area with water.
2. Mix the powder and another cleaner into a thick paste.
3. Apply the 6mm thick layer of mixed paste to the stain carefully not to spill any on non-stained areas.
4. Using a light polyethylene film or other moisture resistant material, cover the treated area. Tape or seal off the edges of the film and make several small holes on the film.
5. Allow 24~48 hours for the paste to completely dry. After that, remove the film and fully dry the paste.
6. Rinse with water and buff with a soft cloth.
7. If the stain is not removed, repeat the application.
 - ※ Before applying to the entire surface, test on a small area.

Marble Polishing Powder

Marble Polishing Powder is an oxalates and special additives based polishing powder designed for renewing worn off polishes on marble, travertine, terrazzo, and etc.

Features & Advantages

- Excellent for renewing the surface gloss
- Creates a high gloss finish
- Fast & Effective
- Easy to use

Field of use

- Marble, travertine, terrazzo, and etc.
- Not suitable for granite, quartzite, artificial stone, and etc.

Storage

- Storage Temperature: 5 ~ 30°C (41 ~ 86°F)
- Application Temperature: 5 ~ 30°C (41 ~ 86°F)

How to use

1. Clean the surface, using "ConfiaAd® Stone Cleaner". The surface should be free of polymers, acrylates and wax layers.
2. Spread a small quantity of the product on the surface.
3. Adding enough water, polish the surface using a polishing machine with nylon polishing pads (White).
 - ※ For a floor, the machine with 140~180RPM and 40~50kg is recommended.
 - ※ Optimal polishing results can be achieved with 400 to 800 grit for marble.
 - ※ Swing the machine left to right and top and bottom over the target area about 15 times.
 - ※ For a small area, use hand polishers not exceeding 1,000 RPM.
 - ※ Treat larger surfaces in segments of max 10~15m².
4. Clean and neutralize the surface thoroughly using "ConfiaAd® Neutral Cleaner".
 - ※ Before applying to the entire surface, test on a small area.



Coverage 30~40 m²/kg (146~195 ft²/lb)

Packaging 10kg (22 lb) Bucket



Granite Polishing Powder

Granite Polishing Powder is a specially formulated polishing powder for polishing granite and maintenance of all types of granite.

Features & Advantages

- Restores original luster of polished granite
- Non-acidic
- Fast & Effective
- Easy to use

Field of use

- All types of Granite

Storage

- Storage Temperature: 5 ~ 30°C (41 ~ 86°F)
- Application Temperature: 5 ~ 30°C (41 ~ 86°F)

How to use

1. Clean the surface, using "ConfiaAd® Stone Cleaner". The surface should be free of polymers, acrylates and wax layers.
2. Spread a small quantity of the product on the surface.
3. Adding water, polish the surface using a polishing machine with nylon polishing pads (White) or steel pads.
 - ※ For a floor, the machine with 140~180RPM and 40~50kg is recommended.
 - ※ Optimal polishing results can be achieved with 1,500 to 3,000 grit for granite.
 - ※ Swing the machine left to right and top and bottom over the target area about 15 times.
 - ※ For a small area, use hand polishers not exceeding 1,000 RPM.
 - ※ Treat larger surfaces in segments of max 10~15m².
4. Wash the treated surfaces thoroughly and after drying, polish with a dry buffing pad (hog hair or wool pad).
 - ※ Before applying to the entire surface, test on a small area.



Coverage 30~60 m²/kg (146~292 ft²/lb)

Packaging 1kg (2.2 lb) Bucket
5kg (11 lb) Bucket

Marble Polishing Powder - White

Marble Polishing Powder-White is an oxalates and special additives based polishing powder designed for renewing worn off polishes on marble, travertine, terrazzo, and etc. The product is effective for white color stones.

Features & Advantages

- Excellent for renewing the surface gloss
- Creates a high gloss finish
- Effective for white color stones
- Fast & Effective
- Easy to use

Field of use

- Marble, travertine, terrazzo, and etc.
- Not suitable for granite, quartzite, artificial stone, and etc.

Storage

- Storage Temperature: 5 ~ 30°C (41 ~ 86°F)
- Application Temperature: 5 ~ 30°C (41 ~ 86°F)

How to use

1. Clean the surface, using "ConfiaAd® Stone Cleaner". The surface should be free of polymers, acrylates and wax layers.
2. Spread a small quantity of the product on the surface.
3. Adding enough water, polish the surface using a polishing machine with nylon polishing pads (White).
 - ※ For a floor, the machine with 140~180RPM and 40~50kg is recommended.
 - ※ Optimal polishing results can be achieved with 400 to 800 grit for marble.
 - ※ Swing the machine left to right and top and bottom over the target area about 15 times.
 - ※ For a small area, use hand polishers not exceeding 1,000 RPM.
 - ※ Treat larger surfaces in segments of max 10~15m².
4. Clean and neutralize the surface thoroughly using "ConfiaAd® Neutral Cleaner".
 - ※ Before applying to the entire surface, test on a small area.



Coverage 30~40 m²/kg (146~195 ft²/lb)

Packaging 10kg (22 lb) Bucket



Marble Polishing Compound

Marble Polishing Compound is a specially formulated polishing paste to polish marble, travertine, and other calcium containing stones (terrazzo). The product is suitable for restoring the shine of the worn stone surfaces.

Features & Advantages

- Restores the original luster of polished stones
- Provides initial water and stain resistance
- Fast & Effective
- Easy to use

Field of use

- Marble, travertine, and other calcium containing stones (terrazzo)

Storage

- Storage Temperature: 5 ~ 30°C (41 ~ 86°F)
- Application Temperature: 5 ~ 30°C (41 ~ 86°F)

How to use

1. Clean the surface, using "ConfiaAd® Stone Cleaner". The surface should be free of polymers, acrylates and wax layers.
2. Stir the product well before use.
3. Wet lightly the surface with clean water.
4. Spread the product on the surface.
5. Polish the surface using a polishing machine with nylon polishing pads (White or Red).
 - ※ For a floor, the machine with 140~180 RPM and 40~50kg is recommended.
 - ※ Optimal polishing results can be achieved with 800~1,500 grit.
 - ※ For a small area, use hand polishers not exceeding 1,000 RPM.
 - ※ Treat larger surfaces in segments of max 10~15m².
6. Clean and neutralize the surface thoroughly using "ConfiaAd® Neutral Cleaner".
 - ※ Before applying to the entire surface, test on a small area.



Coverage 30~40 m²/kg (146~195 ft²/lb)

Packaging 1kg (2.2 lb) × 5 Buckets in 1 Box
5kg (11 lb) Bucket

Polishing Cream for Natural Stones

Polishing Cream for Natural Stone is ready-to-use cream type polishers for natural stones. The product is suitable for polishing new natural stones and restoring the lost shine and color of stone surfaces.



Polishing Cream - Premium

Polishing Cream-Premium is the new polishing cream specially for polishing artificial stone quickly and easily using electric polishing machine. The product is good for restoring the lost shine and colors of the stone surfaces.



Features & Advantages

- Excellent in polish for natural stone
- Non-acidic & Water-based
- Slip resistant
- Patented : KP 10-1378002

Field of use

- Marble, granite, artificial stone, and etc.

Storage

- Storage Temperature: 5 ~ 30°C (41 ~ 86°F)
- Application Temperature: 5 ~ 30°C (41 ~ 86°F)

How to use

1. Pre-grind the surface for removing scratch with 400~600 grit for soft stones and with 1,500~3,000 grit for hard stones.
2. Clean and dry the surface and shake the product well before use.
3. Spread the product evenly on the surface.
4. Adding water, polish the surface using a polishing machine with wool-felt pad (density $\geq 0.5g/cm^3$).
 - ※ For a floor, the 3-plate floor machine with more than 90kg weight is recommended.
 - ※ Swing the machine left to right and top and bottom over the target area several times.
 - ※ For a small area, use hand polishers.
5. Remove residues and rinse thoroughly.
 - ※ Before applying to the entire surface, test on a small area.

Coverage 20~50 m²/L (204~510 ft²/qt)

Packaging 950ml (1qt) × 12 Bottles in 1 Box



Features & Advantages

- Excellent in polish
- No swirl marks and no sticky residue
- Dust free
- Easy to use

Field of use

- Solid surface, engineered stone, granite, marble and terrazzo

Storage

- Storage Temperature: 5 ~ 30°C (41 ~ 86°F)
- Application Temperature: 5 ~ 30°C (41 ~ 86°F)

Coverage 15~30 m²/L (153~306 ft²/qt)

Packaging 1 L (1.05qt) × 12 Bottles in 1 Box

Polishing Cream for Solid Surfaces

Polishing Cream for Solid Surfaces is ready-to-use cream type polishers for Solid Surfaces. The product is suitable for polishing new solid surfaces and restoring the lost shine and color of stone surfaces.



Stone Polish - Wax based

Stone Polish - Wax based is an emulsified wax polisher strengthened with polymer, free from solvents. The product gives a brilliant shine acting as a color enhancer and a sealer for the natural stones.



Features & Advantages

- Excellent in polish for solid surface
- Non-acidic & Water-based.
- Vertical use available

Field of use

- Solid Surfaces (Pure Acrylic & Polyester based)

Storage

- Storage Temperature: 5 ~ 30°C (41 ~ 86°F)
- Application Temperature: 5 ~ 30°C (41 ~ 86°F)

How to use

1. Pre-grind the surface for removing scratch with 400 grit.
2. Clean and dry the surface and shake the product well before use.
3. Spread the product evenly on the surface.
4. Adding water, polish the surface using a polishing machine with wool-felt pad (density $\geq 0.3g/cm^3$).
 - ※ RPM must be less than 600RPM.
 - ※ Swing the machine left to right and top and bottom over the target area several times.
5. Remove residues and rinse thoroughly.
 - ※ Before applying to the entire surface, test on a small area.

Coverage 30~60 m²/L (306~612 ft²/qt)

Packaging 950ml (1qt) × 12 Bottles in 1 Box



Features & Advantages

- Brilliant shining
- Color enhancing effect
- Anti-slippery effect
- Anti-staining
- Highly biodegradable

Field of use

- Marble, granite, travertine, cotto tile, terrazzo, and etc.

Storage

- Storage Temperature: 5 ~ 30°C (41 ~ 86°F)
- Application Temperature: 5 ~ 30°C (41 ~ 86°F)

Coverage 15~30 m²/L (153~306 ft²/qt)

Packaging 1L (1.05qt) × 12 Bottles in 1 Box

Self Polisher

Self Polisher is a polymeric resin based quick drying polishing agent forming a film on the stone surfaces.

Good wetting and self-leveling properties create an excellent shine.

Before After



Coverage 20~40 m²/L (204~408 ft²/qt)

Packaging 1L (1.05qt) × 12 Cans in 1 Box

Features & Advantages

- High gloss without buffing
- Good for cut surfaces, corner, curved edges
- Good wetting and self-leveling effect
- Very fast and easy to use

Field of use

- Marble, granite, terracotta, engineered stone, and etc.

Storage

- Storage Temperature: 5 ~ 30°C (41 ~ 86°F)
- Application Temperature: 5 ~ 30°C (41 ~ 86°F)

How to use

1. Remove the stain, clean the surface and dry.
2. Spread the product evenly on the surface using a brush, a cloth, or a low pressure air spray.
 - ※ Do not use the product exceedingly.
3. Let it dry for 5~10 minutes.
 - ※ For the best result, dry the product for 24 hours.
 - ※ Before applying to the entire surface, test on a small area.

Crystallizer - Granite

Crystallizer – Granite is a high quality stone crystallizing liquid product based on silicates, synthetic resins, and additives.

The product is suitable for restoring the shine of the worn stone surfaces (Polished granite, quartzite, and etc.).



Coverage 50~100 m²/L (510~1,019 ft²/qt)

Packaging 1L (1.05qt) × 12 Bottles in 1 Box

Features & Advantages

- Restores the natural shine
- Ideal for re-polishing old and worn floor.
- Surface structure intensification
- Reduce the absorption of dirt and dust
- Easy to use

Field of use

- Polished granite, quartzite, sandstone, terrazzo, and concrete

Storage

- Storage Temperature: 5 ~ 30°C (41 ~ 86°F)
- Application Temperature: 5 ~ 30°C (41 ~ 86°F)

How to use

1. Clean and dry the surface.
 - The surface must be without any scratches and coatings.
2. Shake the product well before use.
3. Spread the product (10~20ml/m²) evenly on the surface.
4. Immediately polish the surface using a polishing machine with fine steel wool pads or nylon pads, until the product gets completely dry.
 - ※ Treat the surface of 2~3m² at a time.
5. Repeat the procedures until reaching the desired degree of luster.
6. Dry-polish the surface using a polishing machine with soft microfiber disc.
 - ※ Before applying to the entire surface, test on a small area.

Crystallizer - Marble

Crystallizer – Marble is a high quality stone crystallizing liquid product based on silicates, synthetic resins, and additives.

The product is suitable for restoring the shine of the worn stone surfaces (Polished marble, limestone, terrazzo, and etc.).



Coverage 15~30 m²/L (153~306 ft²/qt)

Packaging 500ml (0.53qt) × 20 Bottles in 1 Box

Features & Advantages

- Restores the natural shine
- Ideal for re-polishing old and worn floor
- Surface structure intensification
- Reduce the absorption of dirt and dust
- Easy to use

Field of use

- Polished marble, and porous stones (Limestone, travertine, terrazzo, and etc.)

Storage

- Storage Temperature: 5 ~ 30°C (41 ~ 86°F)
- Application Temperature: 5 ~ 30°C (41 ~ 86°F)

How to use

1. Clean and dry the surface.
 - The surface must be without any scratches and coatings.
2. Shake the product well before use.
3. Spread the product (10~20ml/m²) evenly on the surface.
4. Immediately polish the surface using a polishing machine with fine steel wool pads or nylon pads, until the product gets completely dry.
 - ※ Treat the surface of 2~3m² at a time.
5. Repeat the procedures until reaching the desired degree of luster.
6. Dry-polish the surface using a polishing machine with soft microfiber disc.
 - ※ Before applying to the entire surface, test on a small area.

Clean, Shine & Protect

Clean, Shine & Protect is an effective 3-fuctional product for cleaning, shining, and protecting all kinds of polished natural stones (marble and granite), artificial stone, porcelain, tile, plastic, leather, wood, rubber, and etc.

The product is suitable for the daily maintenance.

Features & Advantages

- 3-Functional Product
 - Clean, enhance the shine, protect
- Renew and maintain anti-stain protection
- Good for daily maintenance of kitchen worktop, countertop, bathroom, table, and etc.
- Spray type : easy to apply

Field of use

- All kinds of polished natural stones (marble and granite), artificial stone, porcelain, tile, plastic, and etc.

How to use

1. Before use, the stubborn stains must be treated with more intensive cleaners "ConfiAd® Stone Cleaner".
2. Shake the product well before use.
3. Spray the product on the surface.
4. Polish evenly with a soft dry cloth until the surface is completely dry.
 - ※ Before applying to the entire surface, test on a small area.

Storage

- Storage Temperature: 5 ~ 30°C (41 ~ 86°F)
- Application Temperature: 5 ~ 30°C (41 ~ 86°F)

Stone Protec

Stone Protec is a fluoro-compounds based high quality anti-stain impregnator for stone surface protection against water, oil, grease, wine, and etc.



Coverage Polished surfaces
15~30 m²/L (153~306 ft²/qt)
Porous surfaces
8~15 m²/L (82~153 ft²/qt)

Packaging 1L (1.05qt) × 12 Cans in 1 Box

Features & Advantages

- Outstanding water and oil repellent (Fluoro-compounds based)
- Excellent stain repellent (Juice, wine, grease, and etc.)
- Allows stones to breathe
- No color enhancement
- Resistance to UV radiation

Field of use

- Marble, granite, limestone, sandstone, slate, porcelain tile, and etc.

Storage

- Storage Temperature: 5 ~ 30°C (41 ~ 86°F)
- Application Temperature: 5 ~ 30°C (41 ~ 86°F)

How to use

1. The surface must be clean and completely dry.
 - ※ A drying time of 1~2 days is necessary after the cleaning of the area to be treated.
2. Apply the product evenly on the surface using a brush, paint roller, mop, or a gun spray.
3. Keep wet for 5~15 minutes.
 - ※ Do not allow to dry on the surface if not being absorbed into the stone.
4. Completely remove all excess with a clean cloth.
 - ※ The best result will be achieved after 24 hours from the treatment.
 - ※ Before applying to the entire surface, test on a small area.



Stone Protec - Limestone

Stone Protec - Limestone is a fluoro-compounds based advanced anti-stain impregnator for stone surface protection against water, oil, grease, wine, and etc. The product is more effective for porous stones.



Coverage Polished surfaces
20~40 m²/L (204~408 ft²/qt)
Porous surfaces
10~20 m²/L (102~204 ft²/qt)

Packaging 1L (1.05qt) × 12 Cans in 1 Box

Features & Advantages

- **Advanced impregnator for porous stones** (Fluoro-compounds based)
- Excellent stain repellent (Juice, wine, grease, and etc.)
- Allows stones to breathe
- No or very slight color enhancement
- Resistance to UV radiation

Field of use

- Marble, granite, limestone, sandstone, slate, porcelain tile, and etc.

Storage

- Storage Temperature: 5 ~ 30°C (41 ~ 86°F)
- Application Temperature: 5 ~ 30°C (41 ~ 86°F)

How to use

1. The surface must be clean and completely dry.
 - ※ A drying time of 1~2 days is necessary after the cleaning of the area to be treated.
2. Apply the product evenly on the surface using a brush, paint roller, mop, or a gun spray.
3. Keep wet 5~15 minutes.
 - ※ Do not allow to dry on the surface if not being absorbed into the stone.
4. Completely remove all excess with a clean cloth.
 - ※ The best result will be achieved after 24 hours from the treatment.
 - ※ Before applying to the entire surface, test on a small area.

Stone Protec-S

Stone Protec-S is a silicone based high quality anti-stain impregnator for stone surface protection against water, oil, grease, wine, and etc.



Coverage Polished surfaces
15~30 m²/L (153~306 ft²/qt)
Porous surfaces
8~15 m²/L (82~153 ft²/qt)

Packaging 1L (1.05qt) × 12 Cans in 1 Box

Features & Advantages

- Outstanding water repellent (Modified Alkylalkoxysilanes based)
- Good oil and grease repellent
- Excellent stain repellent (Juice, wine, grease, and etc.)
- Allows stones to breathe
- No color enhancement
- Resistance to UV radiation

Field of use

- Marble, granite, limestone, sandstone, slate, porcelain tile, and etc.

Storage

- Storage Temperature: 5 ~ 30°C (41 ~ 86°F)
- Application Temperature: 5 ~ 30°C (41 ~ 86°F)

How to use

1. The surface must be clean and completely dry.
 - ※ A drying time of 1~2 days is necessary after the cleaning of the area to be treated.
2. Apply the product evenly on the surface using a brush, paint roller, mop, or a gun spray.
3. Keep wet 5~15 minutes.
 - ※ Do not allow to dry on the surface if not being absorbed into the stone.
4. Completely remove all excess with a clean cloth.
 - ※ The best result will be achieved after 24 hours from the treatment.
 - ※ Before applying to the entire surface, test on a small area.



Stone Protec - Water based

Stone Protec - Water based is a high quality advanced anti-stain impregnator for stone surface protection against water, oil, grease, wine, and etc. The product is a water based penetrating sealer.



Coverage Polished surfaces
30~40 m²/L (306~408 ft²/qt)
Porous surfaces
10~30 m²/L (102~306 ft²/qt)

Packaging 1L (1.05qt) × 12 Bottles in 1 Box

Features & Advantages

- **Water based penetrating sealer** (Fluoro-compounds based)
- Outstanding water and oil repellent (Fluoro-compounds based)
- Excellent stain repellent (Juice, wine, grease, and etc.)
- Allows stones to breathe
- No color enhancement
- Resistance to UV radiation

Field of use

- Marble, granite, limestone, sandstone, slate, porcelain tile, and etc.

Storage

- Storage Temperature: 5 ~ 30°C (41 ~ 86°F)
- Application Temperature: 5 ~ 30°C (41 ~ 86°F)

How to use

1. The surface must be clean and completely dry.
 - ※ A drying time of 1~2 days is necessary after the cleaning of the area to be treated.
2. Apply the product evenly on the surface using a brush, paint roller, mop, or a gun spray.
3. Keep wet 5~15 minutes.
 - ※ Do not allow to dry on the surface if not being absorbed into the stone.
4. Completely remove all excess with a clean cloth.
 - ※ The best result will be achieved after 24 hours from the treatment.
 - ※ Before applying to the entire surface, test on a small area.

Back Surface Protector

Back Surface Protector is an efflorescence blocking sealer for protection against the rising up of stains.

The product is highly recommended for absorbing and highly porous stones.

Before

After



Coverage 10~15 m²/L (102~153 ft²/qt)

Packaging 4L (1.06 gal)

Features & Advantages

- Stops and prevents contaminants rising up from the laying bed to the stone surfaces
- Does not alter the adhesion property
- Water-based (VOC free)
- Ideal for floors and all surfaces

Field of use

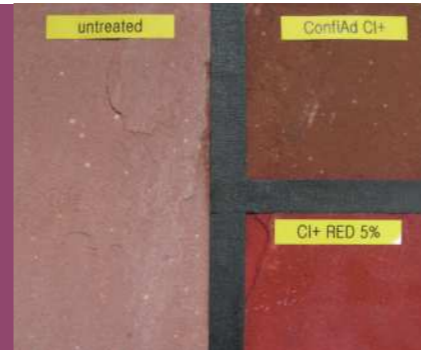
- Back of porous and absorbent stones (Marble, granite, limestone, sandstone, ceramic, terracotta, and etc.)

Storage

- Storage Temperature: 5 ~ 30°C (41 ~ 86°F)
- Application Temperature: 5 ~ 30°C (41 ~ 86°F)

How to use

1. The back surface to be treated must be clean and completely dry.
 - ※ A drying time of 1~2 days is necessary after the cleaning of the area to be treated.
2. Shake the product well before use.
3. Apply the undiluted product evenly on the back and on the side of the material using a brush.
 - ※ For professional use, an airless spray is recommended.
4. Repeat the process until the surface is saturated, 3~4 times recommended.
 - ※ Do not allow to dry on the surface if not being absorbed into the stone.
5. Completely remove all excess with a clean cloth.
 - ※ The best result will be achieved after 24 hours from the treatment.
 - ※ Before applying to the entire surface, test on a small area.



Color Intensifier+

Color Intensifier+ is a ready to use solvent based product designed for intensifying the natural color of stone surfaces.

The product can be colored with universal tinting pastes.



Coverage 30~50 m²/L (306~510 ft²/qt)

Packaging 1L (1.05qt) × 12 Cans in 1 Box

Features & Advantages

- Intensifies the natural color
- Maintains the gloss of the polish
- Can be colored with universal tinting pastes
- Allows stones to breathe
- Excellent weather resistant
- Water and stain resistant effect

Field of use

- Marble, granite, limestone, solid surface, engineered stone, concrete, and etc.

Storage

- Storage Temperature: 5 ~ 30°C (41 ~ 86°F)
- Application Temperature: 5 ~ 30°C (41 ~ 86°F)

How to use

1. The surface must be clean and completely dry.
 - ※ A drying time of 1~2 days is necessary after the cleaning of the area to be treated.
2. Apply the product evenly on the surface using a brush, paint roller, mop, or an airless spray.
3. Allow 10~15 minutes after application.
 - ※ Do not allow to dry on the surface if not being absorbed into the stone.
4. Remove the excess completely with a clean cloth.
5. For very absorbent surface, apply the product a few times more.
 - ※ In case that Universal Tinting Paste (UTP) is used, follow the direction for use provided by the UTP makers.
 - ※ The best result will be achieved after 24 hours from the treatment.
 - ※ Before applying to the entire surface, test on a small area.

Color Intensifier - Water based

Color Intensifier-Water based is a ready to use water based product designed for intensifying the natural color of stone surfaces.



Coverage 20~40 m²/L (204~408 ft²/qt)

Packaging 1L (1.05qt) × 12 Cans in 1 Box

Features & Advantages

- Intensifies the natural color (**Water based**)
- Maintains the gloss of the polish
- Allows stones to breathe
- Excellent weather resistant
- Water and stain resistant effect

Field of use

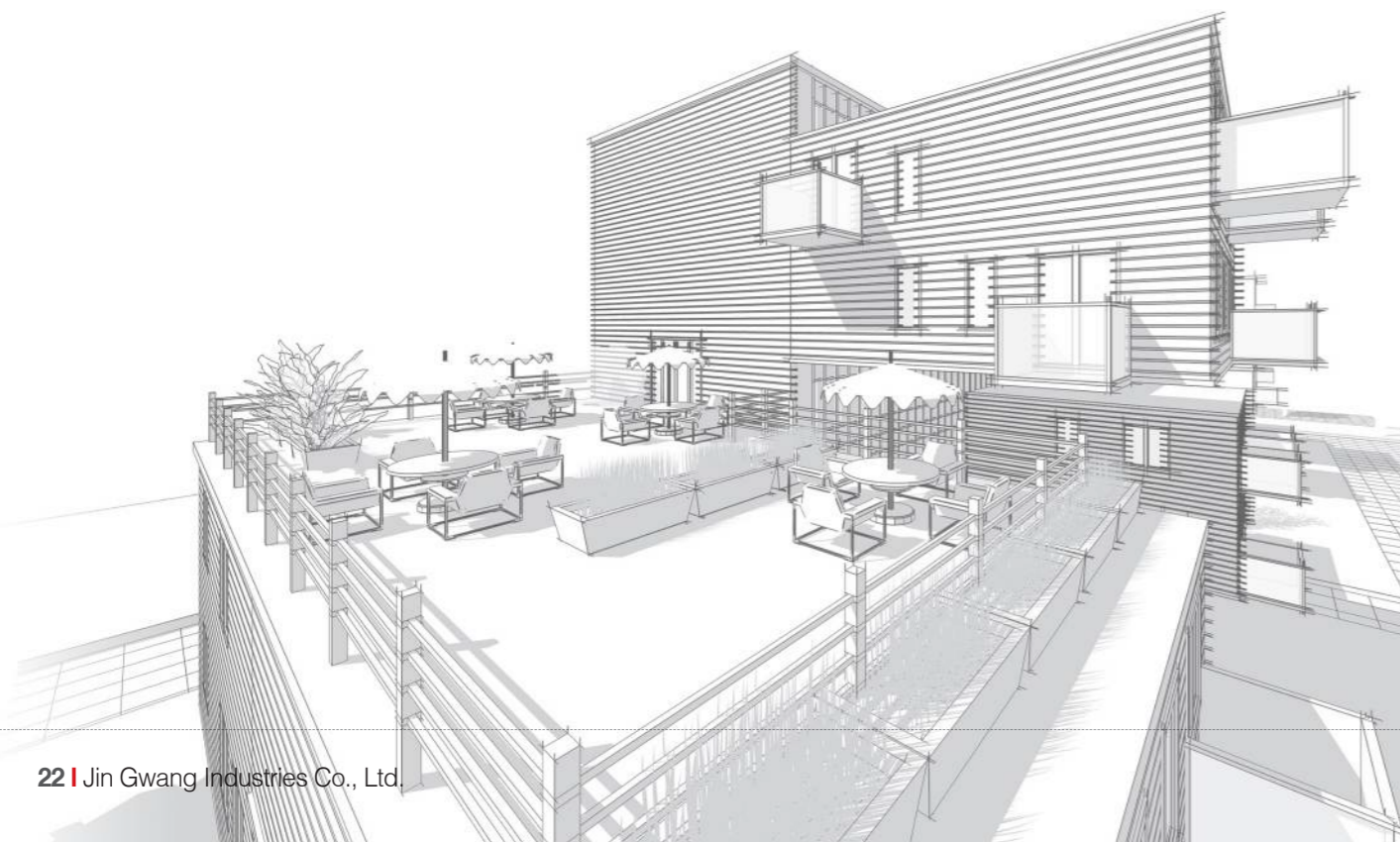
- Marble, granite, limestone, solid surface, engineered stone, concrete, and etc.

Storage

- Storage Temperature: 5 ~ 30°C (41 ~ 86°F)
- Application Temperature: 5 ~ 30°C (41 ~ 86°F)

How to use

1. The surface must be clean and completely dry.
 - ※ A drying time of 1~2 days is necessary after the cleaning of the area to be treated.
2. Apply the product evenly on the surface using a brush, paint roller, mop, or an airless spray.
3. Allow 10~15 minutes after application.
 - ※ Do not allow to dry on the surface if not being absorbed into the stone.
4. Remove the excess completely with a clean cloth.
5. For very absorbent surface, apply the product a few times more.
 - ※ The best result will be achieved after 24 hours from the treatment.
 - ※ Before applying to the entire surface, test on a small area.





Color Intensifier - Super

Color Intensifier-Super is a ready to use solvent based product designed for intensifying the natural color of stone surfaces.

The product is advanced color intensifier for all kinds of stones.



Coverage 20~40 m²/L (204~408 ft²/qt)

Packaging 1L (1.05qt) × 12 Cans in 1 Box

► Features & Advantages

- Intensifies the natural color (**Advanced**)
- Maintains the gloss of the polish
- Allows stones to breathe
- Excellent weather resistant
- Water and stain resistant effect

► Field of use

- Marble, granite, limestone, engineered stone, solid surface, concrete, and etc.

► Storage

- Storage Temperature: 5 ~ 30°C (41 ~ 86°F)
- Application Temperature: 5 ~ 30°C (41 ~ 86°F)

► How to use

1. The surface must be clean and completely dry.
 - ※ A drying time of 1~2 days is necessary after the cleaning of the area to be treated.
2. Apply the product evenly on the surface using a brush, paint roller, mop, or an airless spray.
3. Allow 10~15 minutes after application.
 - ※ Do not allow to dry on the surface if not being absorbed into the stone.
4. Remove the excess completely with a clean cloth.
5. For very absorbent surface, apply the product a few times more.
 - ※ The best result will be achieved after 24 hours from the treatment.
 - ※ Before applying to the entire surface, test on a small area.



Color Restorer

Color Restorer is a ready to use solvent based product designed for restoring the natural color of stone surfaces.

The product is recommended for rough, porous, and absorbent natural stones.



Coverage 10~30 m²/L (102~306 ft²/qt)

Packaging 1L (1.05qt) × 12 Cans in 1 Box

► Features & Advantages

- Restores the faded stone color
- Wet effect
- Allows stones to breathe
- Excellent weather resistant
- Water and stain resistant effect

► Field of use

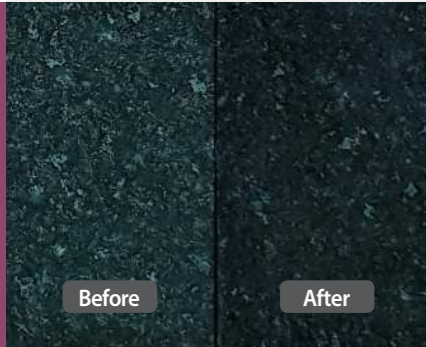
- Marble, granite, limestone, engineered stone, solid surface, concrete, and etc.

► Storage

- Storage Temperature: 5 ~ 30°C (41 ~ 86°F)
- Application Temperature: 5 ~ 30°C (41 ~ 86°F)

► How to use

1. The surface must be clean and completely dry.
 - ※ A drying time of 1~2 days is necessary after the cleaning of the area to be treated.
2. Apply the product evenly on the surface using a brush, paint roller, mop, or an airless spray.
3. Allow 5~15 minutes after application and avoid contact to the moisture and direct sunlight.
 - ※ Do not allow to dry on the surface if not being absorbed into the stone.
4. Remove the excess completely with a clean cloth.
5. Let the product works for at least 4 hours.
 - ※ The best result will be achieved after 24 hours from the treatment.
 - ※ Before applying to the entire surface, test on a small area.



Color Intensifier - Black

Color Intensifier-Black is a ready to use solvent based product designed for intensifying the natural black color of stone surfaces.

The product is advanced color intensifier for black stones such as C-Black, Zimbabwe Black, and etc.



Coverage 20~40 m²/L (204~408 ft²/qt)

Packaging 1L (1.05qt) × 12 Cans in 1 Box

► Features & Advantages

- Intensifies the natural **"Black"** color (**Advanced**)
- Maintains the gloss of the polish
- Allows stones to breathe
- Excellent weather resistant
- Water and stain resistant effect

► Field of use

- "Black Stones"
(Marble, granite, limestone, engineered stone, solid surface, concrete, and etc.)

► Storage

- Storage Temperature: 5 ~ 30°C (41 ~ 86°F)
- Application Temperature: 5 ~ 30°C (41 ~ 86°F)

► How to use

1. The surface must be clean and completely dry.
 - ※ A drying time of 1~2 days is necessary after the cleaning of the area to be treated.
2. Apply the product evenly on the surface using a brush, paint roller, mop, or an airless spray.
3. Allow 10~15 minutes after application.
 - ※ Do not allow to dry on the surface if not being absorbed into the stone.
4. Remove the excess completely with a clean cloth.
5. For very absorbent surface, apply the product a few times more.
 - ※ The best result will be achieved after 24 hours from the treatment.
 - ※ Before applying to the entire surface, test on a small area.





Stone Care Set

Stone Care Set is a kit product for cleaning and protecting.

► Features & Advantages

- Cleaning and protecting
- Easy to carry and apply

► Field of use

- Natural stone, engineered stone, solid surface, tile and etc.

► Storage

- Storage Temperature: 5 ~ 30°C (41 ~ 86°F)
- Application Temperature: 5 ~ 30°C (41 ~ 86°F)



Packaging Eco Multi Purpose Cleaner 600ml
Stone Protec-Water based 500ml

► How to use

1. Clean the surface with **"Eco Multi Purpose Cleaner"** and dry the surface.
2. Apply the **"Stone Protec-Water based"** for the protection.
 - ※ For the detailed information, refer to the TDS for each product.
 - ※ Before applying to the entire surface, test on a small area.



Grease & Oil Remover Set

Grease & Oil Remover Set is a kit product for cleaning, removing grease(oil), and protecting.

► Features & Advantages

- Grease & Oil Remover Set is a kit product for cleaning, removing grease(oil), and protecting.

► Field of use

- Marble, granite, slate, engineered stone, solid surface, concrete, and etc.

► Storage

- Storage Temperature: 5 ~ 30°C (41 ~ 86°F)
- Application Temperature: 5 ~ 30°C (41 ~ 86°F)



Packaging Neutral Cleaner-Low foam 600ml
Grease Remover 250ml
Stone Protec-Water based 500ml

► How to use

1. Remove the grease and oil applying **"Grease Remover"**.
2. Clean the surface with **"Neutral Cleaner-Low foam"** and dry the surface.
3. Apply **"Stone Protec-Water based"** for the protection.
 - ※ For the detailed information, refer to the TDS for each product.
 - ※ Before applying to the entire surface, test on a small area.



Daily Care Set

Daily Care Set is a kit product for cleaning and daily maintenance.

► Features & Advantages

- Cleaning and daily maintenance
- Easy to carry and apply

► Field of use

- Stone, tile, plastic, glass, mirror, etc.

► Storage

- Storage Temperature: 5 ~ 30°C (41 ~ 86°F)
- Application Temperature: 5 ~ 30°C (41 ~ 86°F)



Packaging Eco Multi Purpose Cleaner 600ml
Clean, Shine & Protect 500ml

► How to use

According to the purpose, use the products.

- 1) **Eco Multi Purpose Cleaner**
Eco Multi Purpose Cleaner is an eco-friendly cleaner effective for removing the daily dirt, limescale, oil residues from glasses, mirrors, floors, walls, bathrooms, restrooms, kitchen surfaces, and tiles.
- 2) **Clean, Shine & Protect**
Clean, Shine & Protect is a 3 functional (Cleaning, Shining, Protecting) product for all kinds of polished natural stones.
 - ※ For the detailed information, refer to the TDS for each product.
 - ※ Before applying to the entire surface, test on a small area.



Polyester Adhesive

Polyester Adhesive is polyester resin based adhesive specially designed for "Bonding", "Repairing", "Filling", and "Installation of Grouting" of "Natural Stones" and "Engineered Stones (Quartz Surfaces)". There are 2 different types "Solid (Knife Grade)" and "Flowing".

Features & Advantages

- Good bonding strength
- High viscosity suitable for vertical application: Solid (Knife Grade)
- High Tixotropic (Easy to mix and apply): Solid (Knife Grade)
- Fast drying and hardening
- Well polishable & grindable
- Yellowing resistant

Field of use

- Natural marble, granite, engineered stone, ceramic

How to use

1. The surface to be treated should be clean and completely dry.
2. Take necessary amounts of component A and add 2~4% hardener and mix it thoroughly.
3. The mixture can be worked for 3~15 minutes depending on the surrounding temperature.
4. After 30~60 minutes, the treated parts can be further processed.
 - ※ The hardening process can be adjusted by heat or cold.

Storage

- Store the product in a cool place 10~21°C (50~70°F) away from direct sunlight
- Exposure to the high temperature must be avoided.
- Refrigeration can increase shelf life but freezing should be prevented.

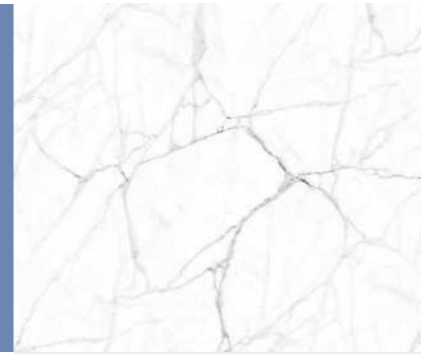
Characteristics

Item	Type	ConfiaAd® Polyester Adhesive	
		Solid (Knife Grade)	Flowing
Working Time/22°C(72°F)		5 ~ 10 min	
Fixture Time/22°C(72°F)		20 ~ 30 min	
Sandability		Excellent	
UV Stability		Excellent	
Heat Stability		Excellent	
Mixed Specific Gravity		1.52	1.1
Shelf Life		1 year	
Mix Ratio by Weight (g)		A : B = 100 : 2 ~ 4	
Viscosity cPs/23°C(73°F)		A (200,000~400,000)	A (500~1,500)



1L, 4L, 19L Bulk (100:2~4)

Packaging 1L, 4L, 19L Bulk



Stone Filler - Clear

Stone Filler - Clear product is knife-grade 2-component adhesive designed to repair and fill light colored marbles and granites.



1L, 4L Bulk (100 : 2~4)

Features & Advantages

- Suitable for light, white colored stones (Carrara, Thassos, Bianco, and other white colored stones)
- High viscosity suitable for repairing vertical stones
- High tixotropic (Easy to mix and apply)
- Good protection to yellowing, nearly non-yellowing
- Big defects, corners, and edges can be filled
- Very good adhesion on natural stones

Field of use

- Marble, granite, engineered stone, ceramic

How to use

1. The surface to be treated must be clean and completely dry.
2. Take necessary amounts of glue from the can.
3. Add 2~4g of the liquid hardener to 100g of adhesive and mix them thoroughly.

Working time minutes(25°C)

- 2% hardener 7 ~ 9 min
- 3% hardener 5 ~ 7 min
- 4% hardener 4 ~ 5 min

4. Apply the product.
5. After 12hours, the treated parts can be another processing (grinding, polishing). The hardening process could be fast by heat and delayed by cold.

※ Note

- Sensitive surfaces such as wood, parquet, carpets must be protected against splashes.
- Always try the product in an inconspicuous area prior to use.

Storage

- Store the product in a cool place 10~21°C (50~70°F) away from direct sunlight.
- Exposure to the high temperature must be avoided.
- Shelf Life: 6 months with the constant storage in a cool place 10~21°C (50~70°F)

Stone Care Quick Guide

		Granite	Marble	Terrazzo	Limestone
Cleaning	General Stain	Stone Cleaner (Dilution available), Neutral Cleaner (Dilution available), Neutral Cleaner-Low Foam (Dilution available)			
	Heavy Duty Stain	Stone Cleaner (Undiluted), Stain Remover Poulitce			
	Daily Cleaning	Stone Cleaner (Dilution) Eco Multi Purpose Cleaner	Neutral Cleaner (Dilution) Eco Multi Purpose Cleaner		Stone Cleaner (Dilution) Eco Multi Purpose Cleaner
	Oil, Grease	Grease Remover, Oil Poulitce			
	Wax, Paint	Wax Stripper			
	Rust	Rust Remover (Acid)	Rust Remover (Neutral), Rust Remover (Gel)		
	Efflorescence	Powerful Acid Cleaner	N/A		
	Protection	Water Repellent	Stone Protec Stone Protec-S Stone Protec-Limestone Stone Protec-Water based		
Stain Repellent					
Oil Repellent		Stone Protec Stone Protec-Limestone Stone Protec-Water based			
Color Enhancing	Intensifying (Restoring)	Color Intensifier+, Color Intensifier-Water based Color Intensifier-Super, Color Intensifier-Black Color Restorer (Unpolished Surface)			
Daily Maintenance	Daily Care	Clean, Shine & Protect Eco Multi Purpose Cleaner			
	Daily Polishing	Crystallizer - Granite	Crystallizer - Marble		

Stone Care Application Effects

Product		Water Repellent	Oil Repellent	Increase of shine	Solvent Type	Applicable Stones	Remarks
Cleaners	Stone Cleaner	N/A	N/A	N/A	Water	All Stones	
	Eco Multi Purpose Cleaner						
	Neutral Cleaner-Low Foam						
	Neutral Cleaner						
	Powerful Acid Cleaner					Acid Resistant Stones	Granite
	Rust Remover (Acid)-Premium						
	Rust Remover (Neutral)						
	Rust Remover(Gel)						
	Grout Cleaner					All Stones	
	Mould & Moss Remover						
	Limescale Remover				Acid Resistant Stones	Granite	
	Wax Stripper						
	Graffiti Remover				Mineral	All Stones	
	Adhesive Residue Remover						
	Sealant Stain Remover						
	Epoxy Remover						
Grease Remover							
Oil Poulitce							
Stain Remover Poulitce							
Poulitce Powder							
Polishers	Marble Polishing Powder	N/A	N/A	N/A	Powder	Marble	
	Marble Polishing Powder-White						
	Granite Polishing Powder						
	Marble Polishing Compound	○	○	○	Water	Natural Stones	
	Polishing Cream for Natural Stones						
	Polishing Cream for Solid Surfaces	N/A	N/A	N/A	Water	Solid Surfaces	
	Polishing Cream-Premium						
	Stone Polish - Wax based				All Stones		
	Self Polisher						
	Crystallizer - Marble						
Crystallizer - Granite	Water				Marble		
Clean, Shine & Protect						All Stones	
Protectors	Stone Protec	○	○	×	Mineral		All Stones
	Stone Protec - S						
	Stone Protec - Limestone						
	Stone Protec - Water based						
	Back Surface Protector					×	
Color Enhancers	Color Intensifier+	○	○	×	Mineral		All Stones
	Color Intensifier - Water based						
	Color Intensifier - Super						
	Color Intensifier - Black						
	Color Restorer					×	